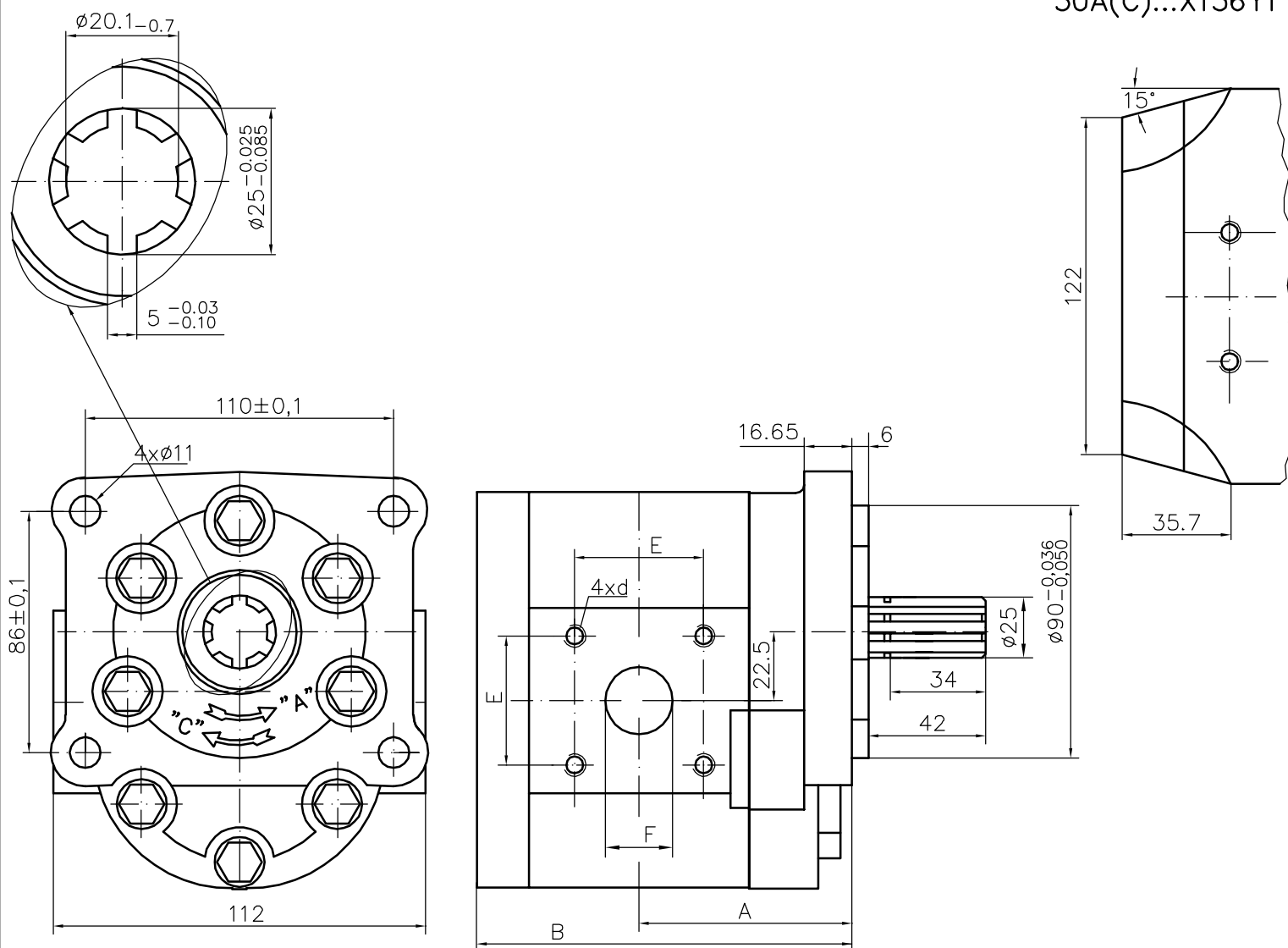


Variant  
30A(C)...X136Y1



Type	Displacement cm <sup>3</sup> /rev	Flow		Pressure P <sub>nom</sub> bar	max Speed n rpm	Dimension							
		at 1500 rpm l/min	at max rpm l/min			Inlet		Outlet					
						A mm	B mm	E mm	d mm	F mm	E mm	d mm	F mm
30A(C)25X136Y	24,5	34,5	69,1	200	3000	64,0	121,7	46	M8	20	46	M8	20
30A(C)32X136Y	32	45,1	75,2	200	2500	67,6	128,9			22			22
30A(C)46X136Y	46	65,6	100,5	190	2300	72,5	141,4	54	M10	27	54	M10	27
30A(C)50X136Y	50	71,3	99,8	175	2100	72,5	145,0						
30A(C)20X136Y1	19,5	27,5	55,0	200	3000	61,8	117,2			19			19
30A(C)25X136Y1	24,5	34,5	57,6	200	2500	64,0	121,6	46	M8	20	46	M8	20
30A(C)32X136Y1	32	45,1	75,2	200	2500	67,6	128,9			22			22
30A(C)46X136Y1	46	65,6	100,5	190	2300	72,5	141,4	54	M10	27	54	M10	27
30A(C)50X136Y1	50	71,3	99,8	175	2100	72,5	145,0						